



SANTA CRUZ MUSEUM OF NATURAL HISTORY

COASTAL LAGOONS:

A Closer Look through Art, History and Science

October 15, 2011- February 25, 2012



Photo/Illustration | Sarah Stoner-Duncan

Those of us living along the Central Coast pass by lagoons on a regular basis, but how often do we stop to appreciate how special and valuable they are? How often do

we get a chance to reflect on how beautiful they are, or how their history is intertwined with our own, or how they support such a wide range of species?

Opening reception for members and invitees:
Friday, October 14 | 6:00 - 8:00 pm

Exhibit open to the public from October 15, 2011 through February 25, 2012

CLASSES
Natural History on Two Wheels: Coastal Lagoons of Santa Cruz Bike Tour
October 22, 2011

Changing Tides: A Historic Tour of Santa Cruz Coastal Lagoons
November 12, 2011

How Healthy Are Our Coastal Lagoons?
February 4, 2012

MUSEUM HOURS
Tuesday through Saturday
10:00 am - 5:00 pm

In our newest exhibit, we join the Central Coast Wetlands Group (CCWG) in inviting you to acquaint yourself—or re-acquaint yourself—with seven local lagoons by looking at them through the eyes of artists, historians and scientists. Museum visitors will discover how land use decisions have, over time, changed the outlines of each site; they will learn the method used by the CCWG to assess the overall health of a lagoon; and they will see how artists are inspired by the ever-changing nature of lagoons.

The seven lagoons we feature in this exhibit are Pescadero Marsh, Scott Creek, Lombardi at Three Mile, Soquel Creek, Pajaro Creek/Watsonville Slough, Carmel River, and Garrapata. ☺

October | December 2011

Connecting People with Nature

NEWSLETTER
Published Quarterly

EDUCATION NOTES

Coastal Lagoons Classes

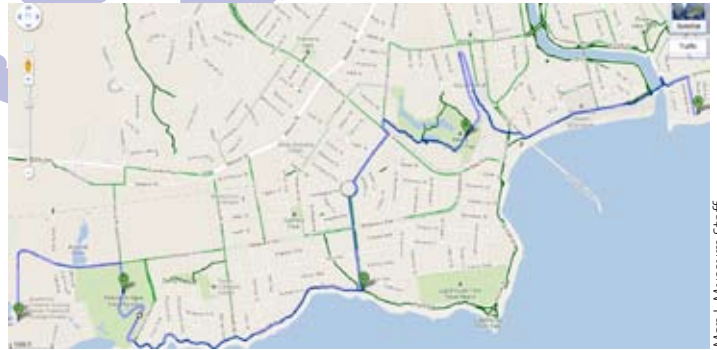
Natural History on Two Wheels: Coastal Lagoons of Santa Cruz Bike Tour

WHEN: October 22 | 8:30 - 12:30 pm (rainy day back-up October 29)

WHO: Museum Education Staff (Deborah McArthur and Matt Miller) and Central Coast Wetlands Group scientists (Sierra Ryan and Sarah Stoner)

COST: \$25 members/\$30 general

DESCRIPTION: Cruise the coast from lagoon to lagoon, observing our local plants and wildlife on the way. Join Museum staff and CCWG scientists with your bicycles and binoculars for a leisurely 6-mile bike tour from the Museum to Younger Lagoon. After bagels and coffee at the Museum, we'll pedal over to San Lorenzo Point, by the river mouth. We'll travel over the historic train trestle to our urban wetland, Neary Lagoon. We'll pedal along West Cliff Drive to observe marine mammals and sea birds (we'll bring a spotting scope and field guides!). We'll then continue on to Natural Bridges State Park to explore the seasonal lagoon at Moore Creek. We'll end our day at Younger Lagoon by the Seymour Center to hear scientists' point of view on our wetlands. 🌀



Map | Museum Staff



Photo | John Law Smith

Changing Tides: A Historic Tour of Santa Cruz Coastal Lagoons

WHEN: November 12, 2011 | 9:00 am - noon

WHO: Historian, Norman Poitevin

COST: \$25 members/\$30 general

DESCRIPTION: How have our urban coastal lagoons changed with the development of Santa Cruz? Join local historian Norman Poitevin on a tour through time of three neighborhood tidal lagoons. We'll begin at the Museum's new Coastal Lagoon exhibit, then rendezvous at historic Woods Lagoon where Arana Creek mixes with the sea. Our guide will help us visualize the community that surrounded this watershed long ago. Next stop, the Live Oak library on Corcoran Lagoon where we will hear fascinating stories from the past and compare period photographs to the present landscape. Finally, we'll walk along Moran Lake Park (actually a lagoon) as we link past and present. 🌀

How Healthy Are Our Coastal Lagoons?

WHEN: February 4, 2012, first of our Connect with Nature Saturday lecture series | 10:00 am

WHO: Scientists from The Central Coast Wetlands Group

COST: \$8 members/\$10 general

DESCRIPTION: Bar-built estuaries are unique habitats that form where river and creek mouths open to the ocean. They are usually influenced by the tides for part of the year, and closed off by a sand bar barrier for the remainder. People have long called these habitats "lagoons". Because of the seasonal variations in these ecosystems, assessing their condition is difficult. Traditional rapid assessment methods for rivers and estuaries do not consider the complexities encountered when assessing lagoons. Join the staff of the Central Coast Wetlands Group, led by Director Ross Clark, on their journey to develop and validate a rapid assessment method for bar-built estuaries. 🌀

Super Summer Saturdays

This July marked the thirteenth year of our highly popular Super Summer Saturday series. This year the crowd was rocked by some earthy beats from the likes of ZunZun and the Banana Slug String Band, and riveted by the shapes, sounds, and size of bats, snakes, porcupines, owls, and even an opossum. We had over 1000 people attend this five-week series. Another sweet addition this summer: Penny Ice Creamery came to every Saturday event and sold frozen treats, donating 10% of sales back to the Museum!

MANY THANKS TO OUR VOLUNTEERS for their help in making this year's program a success—Juan Rodriguez, Erik Hansen, Gloria Lee, Nickie Nasr, Jan Metz, Allison Pam, Molly Lautamo, Cristyn Guenter, Linda Fessette, Sylvia Patience, Conner Chesus, and Cecily Finke. 🌀

CLOCKWISE FROM TOP RIGHT | Two Saturday goers show off some color with a bat mask; Thistle the porcupine with Wildlife Associates' Jen; snake girl Eila with Ball Python around her neck; Banana Slugs rock out with enthusiastic kids.



Photos | Museum Staff





Summer Camps

This year the Museum brought back some seasonal flavor with two summertime favorites. In the **Art and Nature Explorer's Camp**, campers ventured out to nearby hotspots and explored their surroundings, using different media to connect themselves to nature. With guidance from seasoned camp instructor, Lynn Guenther, and her trusty assistant Nina, the kids explored using paints, watercolors, modeling clay, recycled goods, and natural materials like sand to interpret their surroundings. Highlights from one camper: "I loved the hiking and sculpting!"

This year's **Nature and Survival Skills Camp**, based at Nisene Marks State Park, explored nature in a slightly different arena. Led by Tod Haddow of Standing Tree Nature School, and his survivalist assistants Alex and Riley, another group of children have been through the crash camp in survival skills. From making stone tools to keying out edible plants, these campers learned the "ropes" of survival in nature. The camp ended with an overnight trip at Pie Ranch, where the campers made a fire by friction to cook their supper. Look for these camps when they return to the Museum in 2012. ☺



Photos | Tod Haddow (Nature & Survival), Lynn Guenther (Art & Nature)

CLOCKWISE FROM TOP RIGHT | Nature and survival skills building a fire using age-old techniques; Inspecting a crayfish from Nisene Marks; Art and Nature camper constructs animal habitat; Art and Nature Camp crew at Arana Gulch.

School Programs

School's back in, but we're getting kids out – on field trips! The Museum's docent-led programs reached over 5,700 students in the last year.

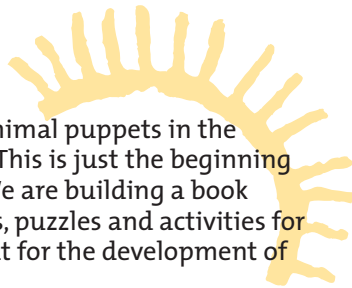
Museum-based tours focus on Ohlone life and culture, animal habitats and adaptations and our temporary exhibits, such as the annual *Art of Nature* exhibit in the spring. We are now serving our second and third generation of students; the parent and grandparent chaperones accompanying the classes reminisce about taking the tours themselves.

Our field-based programs have expanded beyond our 3rd grade Wetland and 5th grade Watershed Walks at Neary Lagoon. Our new Santa Cruz Sandhills Exploration program, for 7th graders at the Randy Morgan Preserve in Scotts Valley, will go into full swing this fall. The Sandhills programs focuses on geology and fossils. Students on the field trip participate in a fossil dig, habitat restoration, and an exploration hike. Thanks to all our docents for making these programs possible!



Kids' Corner

Have you noticed there are animal puppets in the corner by the wetlands exhibit? This is just the beginning of our interactive Kids' Corner. We are building a book shelf and will have nature blocks, puzzles and activities for young people. Keep your eyes out for the development of this space in our back room. ☺



Sentinel Monthly Column

Look for the Nature Connection column every 4th Tuesday of the month in the Santa Cruz Sentinel and online at www.santacruzsentinel.com. Education Manager, Deborah McArthur, writes about local nature and feeling your sense of place. ☺

New Education Manager

Hello Members! I'm excited to join the Museum staff as Education Manager and look forward to meeting you at Museum events. I have come full circle from days out of college when I went through docent training, to leading docent training this fall. It has been a fun, busy summer and the education team is growing and developing even more opportunities to connect to nature. If you have ideas for education offerings you would like to see at the Museum in the future, drop me a line at Deborah@santacruz museums.org, or 420-1135. ☺

RIGHT | New Education Manager, Deborah McArthur hiking with her kids Ronja (5) and Leif (2).



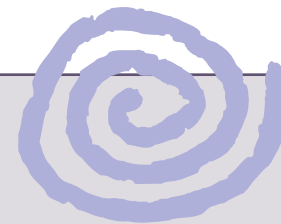
Photo | Museum Staff

EDUCATION NOTES

Educator Open House | NEW!

October 27, 2011 | 4:00 - 6:00 pm

We are excited to welcome educators to the Museum for an afternoon Open House to get to know our educational resources and programs. We'll have our education kits, slideshows and specimens available to explore, and docents on hand to talk about our school and field programs and interpret our displays. ☺

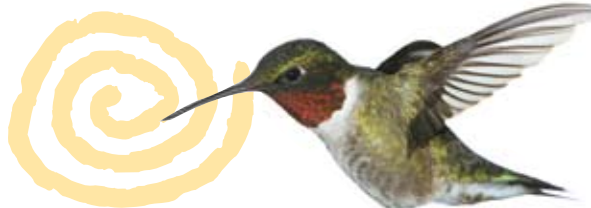


Connect with Nature Series

Back by popular demand this winter are natural history classes for adults. Classes meet every Saturday morning during February. Our series will begin with "How healthy are our Coastal Lagoons?" presented by scientists from the Central Coast Wetlands Group. Each class is \$8 for members and \$10 for the general public. Register online at www.santacruz museums.org ☺

MUSEUM UPDATES

Hummingbird Garden



Resting bumblebee in Clarkia flower.

We have expanded our Garden Learning Center yet again, thanks to the work of our many volunteers over the summer. Since last year's Hummingbird Garden expansion was such a success, we decided to create another new addition. During our Pollination Celebration on June 25, after an informative lecture by UCSC's Chris Lay, Museum volunteers and community members planted a selection of native plants that were specifically chosen to attract native pollinators such as bees, beetles, and butterflies.

The following week, a hardworking group of eighteen corporate volunteers from Cisco arrived at the Museum to help with another huge garden overhaul. They spent the entire day pulling the last of the ivy from the slope near the amphitheater, and created a new planting bed along the back wall of the Museum. They finished off the day by transplanting Douglas iris all over the garden, building a new rock edge around the hummingbird garden, and planting dozens of new natives where the ivy and weeds had been that morning.

The final major gardening event of the summer featured a troop of Girl Scouts visiting from far away Yuba City in mid-July. As part of a weekend



Cisco Systems volunteer garden crew.

visit to Santa Cruz, they came to explore the Museum and complete a service project. These enthusiastic eight-year-olds pulled weeds, searched for native bees, planted California poppies, and harvested seeds.

We invite you to check out these changes next time you are at the Museum. There's something new to see with every visit, and if you're lucky you might stumble across our newest resident, a beautiful garter snake. ☺



Garden volunteer extraordinaire Deb Ospina works with Girl Scouts from Yuba City.

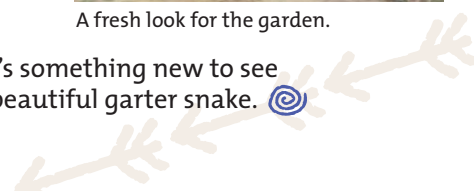


A fresh look for the garden.

Photos | Museum Staff

Progress in Pilkington

From the view of our bustling garden, Pilkington Creek remains in the foreground; the Museum staff and volunteers are readying for another campaign to clear the creek. With the narrow window (August 1 to October 15) granted by the Department of Fish and Game upon us, we are back with a Cal Fire crew and have some big things planned. In September, the Cal Fire crew will be making a huge push in cutting back all the growth that has taken over our neighborhood creek. With a couple of follow-up volunteer days, we will have made another significant stride on the creek restoration. ☺



Our Ed Assistant Peter is Back in Action!

Please help us extend a warm greeting to Pete Wampler as he returns to the Museum, after a seven-month absence, to coordinate the Neary Lagoon programs. Peter and his wife Kira honeymooned in Southeast Asia and into Nepal and India. Some reported highlights were SCUBA diving in Indonesia, sunbathing on Thai beaches, mountain bike trekking in Cambodia and experiencing the beauty and craziness of India. Glad to be back in Santa Cruz, Pete is excited to begin working with students at local schools and becoming reacquainted with Neary Lagoon. ☺

New Board Member | Molly Lautamo

Molly Lautamo graduated from UCSC in 2005 with a BA in Environmental Studies. During her academic career she completed the Natural History Field Quarter course. It was then that she discovered her passion for birding, identifying flowers and connecting with the natural world not only on a personal level but on the level of a naturalist as well. After graduating, Molly dedicated her time as a volunteer docent at the Museum with the Ohlone and animal adaptations tours, special exhibit tours and the Neary Lagoon program. She has also volunteered as a steward with the non-profit Save Our Shores, and as a docent with the Seymour Marine Discovery Center, where she now works as the Admissions Coordinator/Operations Assistant. Molly looks forward to being a part of the Museum's growth and hopes it becomes a pivotal public space in the community that everyone will want to visit not just once but again and again. ☺



Photo | Courtesy of Molly Lautamo

Endangered Neighbors

The Museum of Natural History welcomed members and other invited guests to the opening of its *Endangered Neighbors* exhibit in June. For both Museum staff and conservation photographer Sebastian Kennerknecht, it was our first experience creating an exhibit by ourselves. We thank the many organizations who generously shared their knowledge with us:

Elkhorn Slough Foundation
Monterey Bay Aquarium
Peninsula Open Space Trust

PRBO Conservation Science
Save our Shores
US Fish & Wildlife Service

US Geological Survey
Ventana Wildlife Society



Conservation photographer Sebastian Kennerknecht welcomes visitors to the reception.



Artist Ann Thiermann and Santa Cruz County Bank officer Mary Anne Carson enjoy the exhibit.



Sebastian greets Bill Kampe of the Ventana Wildlife Society.



Robert La Rosa admires a photograph of his trout stream in Soquel.

Photos | Museum Staff

As part of our temporary exhibits, the Museum offers educational extensions such as classes, lectures, self-guided activities and contests. Classes this summer included a photography lecture and field experience with exhibit artist, Sebastian Kennerknecht; a "gallery walk" evening to hear inside stories behind the images and the process of creating the exhibit; and a panel discussion, with leading scientists, that highlighted two endangered neighbors, the Red-legged frog and San Francisco garter snake.

A cell-phone audio tour allowed visitors to walk through the exhibit and hear stories directly from the photographer. For kids, we offered coloring sheets (images of the endangered neighbors from the exhibit), crayons and colored pencils to encourage connection to the different species and habitats. An activity guide, available at the front desk, helped older kids interpret the exhibit's conservation message. A photo contest invited kids to submit a photo and story about their image. ☺



Endangered Neighbors photography workshop group at Four Mile Beach.

Photos | Sebastian Kennerknecht

MUSEUM UPDATES

Docent Training

Do you have a desire to learn about the natural world? Do you enjoy sharing your knowledge with others? Become a docent! Volunteer docents lead Museum-based school tours on Ohlone People and Culture and Local Animals and Habitats, and highlight our temporary exhibits such as Coastal Lagoons and Art of Nature.

Docents also teach our field-based environmental education programs including the 3rd grade Wetland Walk and 5th grade Watershed Walk at Neary Lagoon. And new this year, we are offering a 7th grade program, Santa Cruz Sandhills Exploration, which focuses on geologic history, fossils, and the unique Sandhills habitat.

Becoming a docent is a great opportunity to learn about the natural and cultural history of our region, gain hands-on experience working with students, and be a part of a dedicated community.

No previous experience is necessary to join our docent team! Visit www.santacruz museums.org to register.

FALL TRAINING SESSIONS:

Monday, September 12 | 10:00 am - 1:00 pm Monday, September 21 | 10:00 am - 1:00 pm
Monday, September 19 | 10:00 am - 1:00 pm Monday, October 3 | 10:00 am - 1:00 pm

Volunteer Training

Front Desk Volunteer Training—Monday October 10th from 10:00 am - 12:00 pm. People should contact liz@santacruz museums.org or call 420-6115 for more information and to RSVP. A front desk volunteer's main duty is to make Museum visitors feel welcome. They assist with admission and gift shop sales.

Fellow Museum Celebrates 25th Anniversary

The Santa Cruz Surfing Club Preservation Society and the city of Santa Cruz joined forces to throw a 25th birthday party for the Santa Cruz Surfing Museum. Local and state officials took turns at congratulating the founding members of the museum for their enduring gift to the community, one that firmly establishes Santa Cruz' claim to the name 'Surf City'.



Harry Mayo, original Santa Cruz Surfing Club member, and Dannette Shoemaker, Director of Parks and Recreation, enjoy the celebration.



John Anderson, who helped install the exhibits, with current Museum staff Jesse Shank.



Longtime curator Charles Prentiss and tireless museum volunteer Boots McGhee.



Mayor Ryan Coonerty recognizes the SCSCPS for their work in keeping the Surfing Museum open.

Photo | Museum Staff

A Special New Member

Museum Outreach Coordinator

Jaime Karaszewski and her husband Tyler welcomed their first child, Katherine Ava, on Sunday, August 21. Her Museum family looks forward to making her acquaintance!

Photo | Tyler Karaszewski



Holiday Sale @ The Museum

December 2 and 3
Friday and Saturday
10:00 am – 5:00 pm

Assemble-It-Yourself Birdhouse
made from recycled materials \$9.95 each



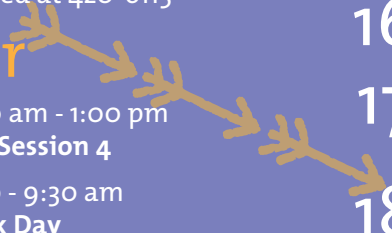
September

- 10 Saturday – 10:00 am and 5:00 pm
Final Day of Endangered Neighbors exhibit
- 12 Monday – 10:00 am - 1:00 pm
2011-2012 Docent Training Session 1
First of four. Please sign up in advance at www.santacruz museums.org
- 16 Friday – 10:00 am – noon
Volunteer Garden Work Day
call Matt if interested at 420-1168
- 19 Monday – 10:00 am - 1:00 pm
Docent Training Session 2
- 21 Wednesday – 5:30 - 8:00 pm
SCMA board meeting
- 26 Monday – 10:00 am - 1:00 pm
Docent Training Session 3
- 28 Thursday – 5:30 - 7:30 pm
Volunteer Tidepooling
call Liz if interested at 420-6115



October

- 3 Monday – 10:00 am - 1:00 pm
Docent Training Session 4
- 6 Thursday – 6:30 - 9:30 am
Fall Bike-to-Work Day
Learn more at bike2work.com/s_cruz
- 6 Thursday – 5:30 – 6:30 pm
Improving Bicycling Conditions in Santa Cruz: What lessons can we learn from Europe?
A presentation by former Museum staff Sarah Underwood
- 10 Monday – 10:00 am - noon
Front Desk Volunteer Training
contact liz@santacruz museums.org or call 420-6115 for more information and to RSVP
- 14 Friday – 6:00 – 8:00 pm
Opening reception for new exhibit:
Exploring Coastal Lagoons: A Closer Look through Art, History, and Science
- 15 Saturday – 10:00 am – 5:00 pm
Coastal Lagoons opens to the public through February 25, 2012
- 19 Wednesday – 5:30 - 8:00 pm
SCMA board meeting



- 21 Friday – 10:00 am – noon
Volunteer Garden Work Day
call Matt if interested at 420-1168
- 22 Saturday – 8:30 am – 12:30 pm
Natural History on Two Wheels: Coastal Lagoons of Santa Cruz Bike Tour
- 27 Thursday – 4:00 – 6:00 pm
Teacher Open House | Come learn about our education kits, tours, and additional resources
- 27 Thursday – 7:30 - 10:00 pm
General meeting | Santa Cruz Bird Club | Officers meet at 6:30



November

- 12 Saturday – 9:00 am - noon
Changing Tides: A Historic Tour of Santa Cruz Coastal Lagoons
- 16 Wednesday – 5:30 - 8:00 pm
SCMA board meeting
- 17 Thursday – 7:30 - 10:00 pm
General meeting | Santa Cruz Bird Club | Officers meet at 6:30
- 18 Friday – 10:00 am – noon
Volunteer Garden Work Day
call Jaime if interested at 420-116
- 22 Tuesday – 2:00 – 4:00 pm
Volunteer Tidepooling | call Liz if interested at 420-6115
- 24-27 Museum closed for Thanksgiving

December

- 2-3 Friday + Saturday 10:00 am – 5:00 pm
Holiday Sale in the Museum Gift Store | Members receive 15% discount on any item
- 25 **Museum closed for the holidays** | we will re-open on Tuesday, January 3, 2012

MARK YOUR CALENDARS

ART AND NATURE EXHIBIT returns to the Museum on Friday April 6, 2012



Welcome

New SCMA Members and Donors

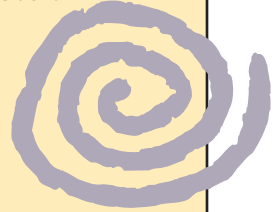
Jessica and Zachery Adam ~ Kischka and Julie Bluspiro ~ Krista Bramson ~ Carla Carstens ~ Dawn Castello ~ Robert and Sarah Chen ~ Lionel Church ~ Lily Cosgrove ~ Mrs Robert Eaton ~ Liam Epstein ~ Far West Nursery ~ Debra Feldstein and Ken Chizinsky ~ John Fisher and Nadine Golden ~ Greg and Jennifer Ford ~ Kathy Gies and Richard Egelhofer ~ Shaina Hall ~ Anne and Albert Isaacs ~ Dirk Janssens ~ Sol Katzman and Lisa Hochstein ~ Tasha Keagan ~ Christian Kennerknecht ~ Sara Kew Bartlett ~ Emily Klein ~ Robert La Rosa ~ Ron Lauder and Rachel Hitchcock ~ Kathleen Lavelle and Jeff McNeil ~ Kathie and Mark Magellan ~ Rita Mehta and Jack Redwine ~ Donna Meyers and Roberta Hunter ~ Matt Miller ~ Tony and Rachel Mitchell ~ Marin Muller and Jessie Cardona-Muller ~ Marilyn Neher ~ Annette Oldon and Ethan Sanford ~ Joann Panzardi ~ Carol Pelletier ~ ProBuild Santa Cruz ~ Elizabeth Quinn ~ Lauren Ross ~ Susan Sanchez ~ Alice Sickels ~ Dorothy Smith ~ Lisbeth Solberg ~ Geneva and Jack Sperow ~ Katy Stonebloom and Gary Bloom ~ Jennifer Thiede ~ George Todd ~ Patricia White-Kaster ~

THANK YOU!



Board of Directors

Rainbow Mitchell-Fox, *President*
 Patty Quillin, *Past President*
 Naomi Gardner, *Vice-President*
 David Tanza, *Treasurer*
 Hilary Benton
 Molly Lautamo
 Donna Meyers
 Glenn Nelson



Museum Staff

Liz Broughton, *Museum Administrator*
 Dan Harder, *Executive Director*
 Jaime Karaszewski, *Outreach Coordinator*
 Lise Peterson, *Operations Manager*
 Deborah McArthur, *Education Manager*
 Matt Miller, *Interim Outreach Coordinator*
 Peter Wampler, *Education Assistant*
 Jesse Shank
 Mary Verutti } *Museum Attendants*



SANTA CRUZ MUSEUM OF NATURAL HISTORY

1305 East Cliff Drive | Santa Cruz, CA 95062
 831.420.6115 | www.santacruz museums.org
 FAX 831.420.1137 | Surfing Museum 831.420.6289
 E-MAIL | staff@santacruz museums.org

Museum of Natural History
 Tuesday – Saturday | 10 am–5 pm
 Closed Sunday and Monday

Surfing Museum
 Thursday – Monday | noon–4 pm
 Closed Tuesday and Wednesday

Nonprofit Org.
 US POSTAGE
PAID
 SANTA CRUZ, CA
 Permit # 209

ADDRESS SERVICE REQUESTED



October | December 2011

Members' NEWSLETTER