



# SANTA CRUZ MUSEUM OF NATURAL HISTORY

Coming this fall to the Museum of Natural History



# BONES

## AN INSIDE LOOK AT NATURE

Photos | Frank Perry

What animal has bones like these?

**Opening reception for members and invitees only:**  
**Friday, October 1**  
**6:00 -8:00 pm**

**Exhibit open to the public from October 2, 2010 through February 26, 2011**

**MUSEUM HOURS**  
**Tuesday through Saturday**  
**10:00 am - 5:00 pm**



**THE MUSEUM** has decided to reveal a few skeletons from its closet—and just in time for Halloween! We are proud to offer the **Bones** exhibit, a display of skulls, teeth, and bones from fishes, reptiles, mammals, and birds. The exhibit offers an “inside look” at adaptation and biodiversity, from whales to hummingbirds, and encourages visitors to consider the question ‘what can we learn from bones?’ Bones can tell us a lot of stories: where an animal lived and what it ate; what diseases or injuries it suffered, and how old it was when it died. Whether it be the downcurved bill of a shorebird, the telescoped skull of a dolphin, or the finger bones in a bat’s wing, every bone tells a story.

Inspiration for this exhibit came from the recent donation to the Museum of the Ronald Wickum collection of skulls from California mammals. We will have fossil bones on display as well, including a section of the whale skeleton discovered last summer during the County of Santa Cruz’ Pleasure Point seawall project. This exhibit marks the first time that either the Wickum Collection or the whale skeleton has been on display for the general public.

The Bones exhibit will also incorporate specimens from the Museum’s own osteological collection, as well as items on loan from the UCSC Museum of Natural History, Long Marine Laboratory and Rancho Del Oso State Park.

If you are still wondering whose bones are pictured here, well, you’ll find out when you come see the exhibit. ☺

October | December 2010

Connecting People with Nature

NEWSLETTER  
Published Quarterly

# EDUCATION NOTES

## Super Summer Saturdays

This July brought the return of our ever-popular **Super Summer Saturdays**. With a range of programming from environmentally-themed musical acts to bats, porcupines and a 50-pound boa constrictor named Big Mama, these events were real crowd pleasers. Over 1000 people attended the five-week series.



**CLOCK WISE FROM TOP LEFT** | Board member Larry Pageler snuggles with Big Mama; Banana Slug String Band translates slug talk for the audience; ZunZun drums up crowd support; ZunZun gets kids of all ages dancing; Thistle the porcupine eating kiwi from Wildlife Associates staff; Monique Lee of the California Bat Conservation Fund shows an adult bat.

Photo credit clockwise from top left | Museum Staff, Kira Henderson, Museum Staff (2 of Zun Zun), Tyler Karaszewski, and Christina Floyd.

Many thanks to our volunteers for their help in making this year's program a success. Glenn Bartz | Benjamin Chapman Leslie Fisher-Sanders | Christina Floyd | Cristyn Gunther | Lani Hall | Gloria Lee | Heidi Morgan | Nickie Nasr Mary Nelson | Allison Pam | Liberte Reilly | Emily Scheff | Gail Sherman | Vicki Sutherland ☺

## Neary Lagoon Wetland Walk Launches Into 6th Year

The Museum is looking forward to offering the Neary Lagoon Wetland Walk for the sixth consecutive year. After an initial pilot in 2005, this program continues to grow and extend its reach to area grade school children. Working primarily with third-grade classrooms, the Wetland Walk saw over 1,300 students explore Neary Lagoon in the 2009-2010 school year. Coming with them were over 400 adult chaperones, many of them also first-time visitors to the lagoon. As we welcome

new classrooms to Neary Lagoon, we must acknowledge our patient, knowledgeable docent crew, which has been key to the continued growth of this program. Please join us as we salute their service and welcome another exciting school year! ☺



The Museum thanks **Outdoor World** for helping us with the replacement of binoculars for our Neary Lagoon program. This allows us to keep our promise that each child will have a pair of his or her own to use.

## Wetland Walk Extends Into Summer

Although we normally offer the Wetland Walk only during the school year, this summer we had the opportunity to expand the tour schedule into July. As interest grows and word spreads, more organizations are contacting the Museum's Education Department for guided tours around this hidden gem of Santa Cruz. We were pleased to offer tours to three local groups: the Mercy Apartments Reading Club, seniors from the Loudon Nelson center, and the Beach Camp. On our walks, we had the usual sightings of mallards, grebes and wood ducks. However, some of the visitors were treated to a green heron, a red-tailed hawk and the quick streak of a belted kingfisher. As the Neary Lagoon Wetland Walk continues to grow, we hope to be a year-round presence to the community. ☺



Photo | Museum Staff

Photo | Museum Staff



## Fifth-Grade Pilot Program Goes Prime Time

This fall, the Museum staff will launch the Museum's newest educational program, which will offer some new curriculum at a familiar location. The Neary Lagoon Watershed Walk, piloted last spring with a limited number of schools, will be offered to all public school fifth-grade classes in the City of Santa Cruz. Participating students will be given the tools to closely examine how watersheds operate, and how human activities affect these delicate systems. Combining classroom activities and outdoor field work, the program will culminate in students' testing the health of the watershed at Neary Lagoon. ☺

## Summer Camps

The Museum was happy to welcome back two perennial favorites as part of our summer programming. In the **Art and Nature Explorer's Camp**, participating campers were encouraged to explore their artistic side while capturing images of the natural world. Veteran instructor, Lynn Guenther, got the children excited about using different materials in a variety of ways. From scientific illustration to sand sculpture, the campers were able to explore such media as paints, watercolors, modeling clay, recycled goods—and of course natural materials like sand.



Art & Nature Camp Photos | Lynn Guenther

Nature & Survival Skills Camp Photos | Museum Staff

Keeping on the theme of exploration, the Museum also welcomed the return of the **Nature and Survival Skills Camp**, based at Nisene Marks State Park. Led by Tod Haddow of Standing Tree Nature School, the campers had a great time as they learned some basic, yet little-known, techniques for survival in the wild. While making fire was a popular favorite, the children also learned shelter-building, camouflaging and discerning edible plants. The week ended with a special overnight at Pie Ranch, where the campers learned the power of group dynamics. They had to make a fire by friction to cook their dinner. No matches allowed! Look for these popular camps to return to the Museum in 2011. ☺

**CLOCKWISE FROM TOP LEFT |** Art & nature explorer shows her diorama work; another Art and nature explorer sketches Museum exhibit; Nature and survival skills campers cozy up for a group photo; campers prepare for an overnight stay at Pie Ranch; rekindling the art of fire from friction; Art & nature explorers at ease with the whale.

### COMING SOON:

## New Natural History Saturday Series for Adults

January 2011

The museum will offer this series of natural history programs on Saturdays from January 28 - February 25. Classes will cover the following topics: Santa Cruz geology, Ohlone culture and history, the Santa Cruz Sandhills, and local birding basics. Look for more information in the next newsletter or stay tuned to [www.santacruz museums.org](http://www.santacruz museums.org). ☺

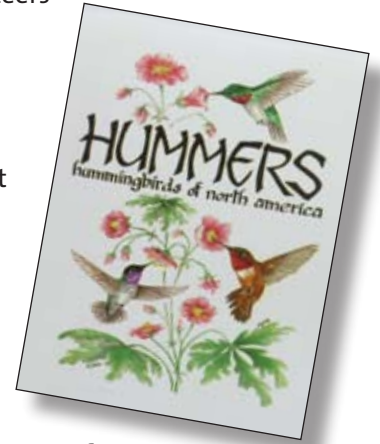


# MUSEUM UPDATES

## Hummingbird Garden



The Museum expanded its Garden Learning Center this summer, when our volunteers created a new hummingbird garden as a part of our Super Summer Saturdays *Celebrate Urban Birds* event on July 24. Prior to planting day, several volunteers tackled the difficult task of removing invasive periwinkle and English ivy to make room for a variety of California native plants. It took just a few days for the hummingbirds to discover this new oasis, and they've



continued to visit regularly. Later this year we will add plant identification signs and a 'plant calendar' showing visitors how to keep their own gardens in year-round bloom. This project was made possible by a grant from the Seabright Neighborhood Association. Additional thanks to the California Native Plant Society, Elkhorn Slough Reserve, Native Revival Nursery, and our Museum volunteers: Bree Candiloro, Ben Chapman, Tyler Karaszewski, Gloria Lee, Nancy Lenz, Jim Rolens, and Steve Zieler. ☺

Photos | Museum Staff/iStock

## Pilkington Creek Cleanup

This summer, Museum volunteers helped launch a habitat-restoration project in Pilkington Creek, which flows through Tyrrell Park, just steps away from the Museum. Led by Museum volunteer and neighborhood resident Nancy Lenz, volunteers are working to remove nonnative plants such as English ivy and New Zealand mattress wire vine. Three work days have already taken place and volunteers are steadily making progress. Eventually, we will re-introduce more California native plants as a part of this effort to clean up the creek and restore it to a more natural riparian habitat. This project is a collaboration between the Museum and



Photos | Tyler Karaszewski



Friends of Parks and Recreation. This first phase is being funded by a grant from the Chuck Haugen Conservation Fund. All are welcome to join the restoration crew. Additional work days will be held here at the Museum on October 2 and 23 from 10:00 am - 1:00 pm. ☺

**TOP** | "Before" view of the ivy slated for removal, with the volunteers in the background.

**LEFT** | Volunteers Nancy Lenz and Cristyn Gunther removing ivy.



# UPCOMING EXHIBITS @ THE MUSEUM

## COMING IN 2011: New Exhibits at the Museum

Next year, the Museum will mount two new temporary exhibits, both highlighting the unique habitats of Santa Cruz County.

In **ENDANGERED NEIGHBORS** we will collaborate with local nature photographer Sebastian Kemmerknecht on an exhibit that calls attention to the sixteen endangered species found in the Monterey Bay area. Some of these species are endemic to the Santa Cruz area, some visit on their way to breeding grounds in Alaska or Canada, and some nest in the redwood forest while spending the remainder of the year at sea. See photographs of these animals in their habitats, and learn why protecting those habitats is so important.

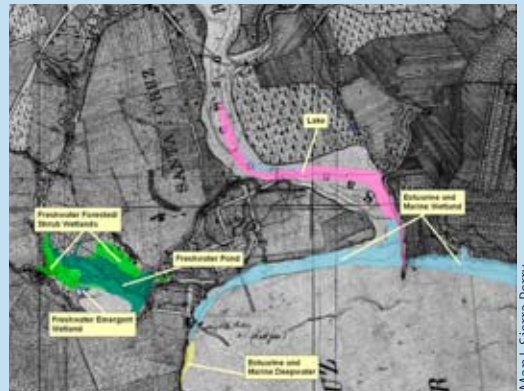
The **COASTAL LAGOONS** exhibit, to be produced in collaboration with the Central Coast Wetlands Group, is designed to increase the community's understanding and appreciation of the many lagoons along the central coast of California. We will explore



Photo | Sebastian Kemmerknecht



the importance of lagoons in providing habitat and in managing watershed flow, look at how each lagoon has changed over the last hundred years, and learn how the scientists at the Central Coast Wetlands



Map | Sierra Perry

Group measure the overall health of a given lagoon. We will also include artists' representations of each of the sites. 🌀

**TOP** | Endangered otters take refuge in Monterey Bay.

**LEFT** | Lagoons play a key role in water quality and flood prevention, as well as providing habitat for endangered species.

**RIGHT** | The Coastal Lagoons exhibit will compare the historical footprint of each lagoon to that of the present day.

# MUSEUM UPDATES

## New Faces

Museum Education Manager Kristen Van Kley and her husband, Martin Spierings, welcomed their first child in early July. Hayden Nicholas Spierings weighed in at 8 lbs, 13 oz and 22.5 inches tall. Museum staff was happy to make Hayden's acquaintance on a visit in August. ☺



Outreach Coordinator Jaime Karaszewski visits with Hayden and Kristen.



Photo | Museum Staff

## Welcome New Board Member

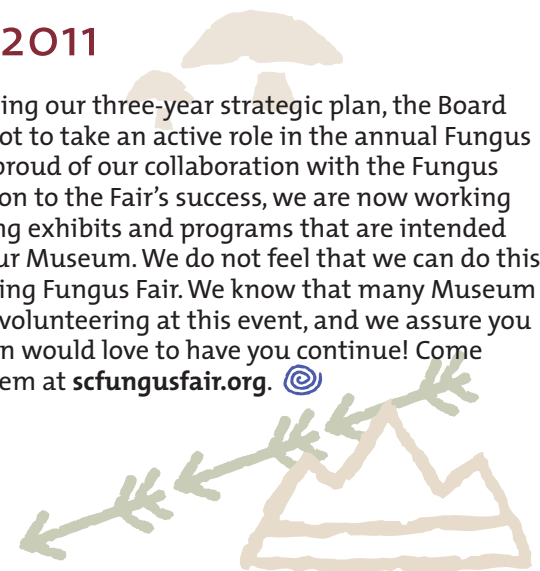
The Board of Directors recently welcomed Rainbow Epstein to their ranks. Rainbow grew up on the east side of Santa Cruz, and is a graduate of UCSC. Before joining the Museum board, she was active in Santa Cruz Neighbors, and completed the board match training offered by the Community Foundation of Santa Cruz. ☺

## Fungus Fair 2011

As an outcome of completing our three-year strategic plan, the Board of Directors has decided not to take an active role in the annual Fungus Fair in 2011. While we are proud of our collaboration with the Fungus Federation and contribution to the Fair's success, we are now working on several new and exciting exhibits and programs that are intended to bring more people to our Museum. We do not feel that we can do this while adequately supporting Fungus Fair. We know that many Museum members look forward to volunteering at this event, and we assure you that the Fungus Federation would love to have you continue! Come October, please contact them at [scfungusfair.org](http://scfungusfair.org). ☺



Photo | Museum Staff



## Docent Training This Fall


**Do you have a desire to learn about the natural world? Do you enjoy sharing your knowledge with others?** Then become a docent! Museum docents are volunteer tour guides trained by museum staff to lead school programs on Ohlone culture and history, and on local animals and habitats. Docent opportunities are also available in our outdoor programs at Neary Lagoon and the Sandhills. No previous experience is necessary.

**Please make a note of the Fall 2010 Docent Training dates:**

Every Monday, September 13 - October 4 from 10:00 am - 1:00 pm, plus three tour observations during October 5 - 15. Please pre-register for docent training online at [www.santacruz museums.org](http://www.santacruz museums.org)

For more information, contact the Education Manager at 420-1135. ☺

The Museum of Natural History is now a certified member of the Monterey Bay Area Green Business Program. Our thanks to City staff and its partners for their support in our earning this recognition!




## September 2010

- 13 Monday – 10:00 am - 1:00 pm  
**Docent Training** for 2010-11 school year | First of four sessions  
Please sign up ahead of time at [www.santacruz museums.org](http://www.santacruz museums.org)
- 15 Wednesday – 5:30 - 7:30 pm  
**SCMA board meeting**
- 20 Monday – 10:00 am - 1:00 pm  
**Docent Training Session 2**
- 27 Monday – 10:00 am - 1:00 pm  
**Docent Training Session 3**
- 30 Thursday – 7:30 - 10:00 pm  
**General meeting | Santa Cruz Bird Club** | Officers meet at 6:30

## October 2010

- 1 Friday – 6:00 - 8:00 pm  
Opening reception for new exhibit – **Bones: An Inside Look at Nature**
- 2 Saturday – 10:00 am - 5:00 pm  
**Bones: An Inside Look at Nature**  
Opens to public through February 26, 2011
- 2 Saturday – 10:00 am - 1:00 pm  
**Pilkington Creek Cleanup** – contact [nanlenz@cruzio.com](mailto:nanlenz@cruzio.com) for more information
- 4 Monday – 10:00 am - 1:00 pm  
**Docent Training Session 4**
- 6 Wednesday – 7:00 - 9:00 pm  
**Mushroom Identification Class** – must be members of the Fungus Federation of Santa Cruz to attend. See [www.fungusfed.org](http://www.fungusfed.org) to join!
- 7 Thursday – 6:30 - 9:30 pm  
**Fall Bike-to-Work Day** – learn more at [bikezwork.com/s\\_cruz/index.html](http://bikezwork.com/s_cruz/index.html)
- 20 Wednesday – 5:30 - 7:30 pm  
**SCMA board meeting**
- 23 Saturday – 10:00 am - 1:00 pm  
**Pilkington Creek Cleanup**
- 27 Wednesday – 7:00 - 9:00 pm  
**Mushroom Identification Class**  
Fungus Federation of Santa Cruz

- Thursday – 7:30 - 10:00 pm  
**General meeting | Santa Cruz Bird Club** | Officers meet at 6:30

## November 2010

- Wednesday – 7:00 - 9:00 pm  
**Mushroom Identification Class**  
Fungus Federation of Santa Cruz
- Wednesday – 5:30 - 7:30 pm  
**SCMA board meeting**
- Thursday – 7:30 - 10:00 pm  
**General meeting | Santa Cruz Bird Club** | Officers meet at 6:30
- Tuesday – 7:00 - 9:00 pm  
**Mushroom Identification Class**  
Fungus Federation of Santa Cruz
- Tuesday – 7:00 pm - 9:00 pm  
**Waterfowl that Whiten the Sky**  
Pre-trip lecture and slideshow for registered participants

## December 2010

- Wednesday – 7:00 - 9:00 pm  
**Mushroom Identification Class**  
Fungus Federation of Santa Cruz
- Friday and Saturday  
10:00 am - 5:00 pm | **HOLIDAY SALE** in the Museum gift store – Members receive 15% discount on any item
- Saturday 8:30 am – Sunday 3:00 pm  
**Waterfowl that Whiten the Sky** | Field Trip to Sacramento National Wildlife Refuge. Please register at [www.santacruz museums.org](http://www.santacruz museums.org)
- Wednesday – 5:30 - 7:30 pm  
**SCMA board meeting**
- Tuesday – 7:00 - 9:00 pm  
**Mushroom Identification Class**  
Fungus Federation of Santa Cruz
- Last day open before Holiday closure

### RE M I N D E R

#### MUSEUM HOLIDAY SCHEDULE

The Museum will be closed from Wednesday, December 23 through Monday, January 3, reopening on Tuesday, January 4.



Handmade wheat straw ornaments – several styles to choose from. Prices from \$4 to \$7 each.



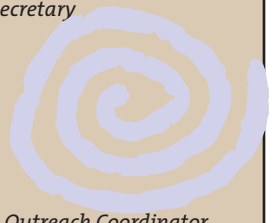
# Holiday Sale @ The Museum

December 3 and 4  
Friday and Saturday  
10:00 am – 5:00 pm



## Board of Directors

- Patty Quillin, *President*
- Naomi Gardner, *Vice-President*
- David Tanza, *Treasurer*
- Rainbow Epstein, *Secretary*
- Joni L. Janecki
- Glenn Nelson
- Larry Pageler



## Museum Staff

- Jaime Karaszewski, *Outreach Coordinator*
  - Kristen Van Kley, *Education Manager*
  - Lise Peterson, *Operations Manager*
  - Peter Wampler, *Education Assistant*
  - Garrett McCown
  - Jesse Shank
  - Mary Verutti
- } *Museum Attendants*

THANK YOU!

## New SCMA Members and Donors

Susan Baron ≈ Sara and John Blakeslee ≈ Christine Candelaria-Duryea ≈ Mike Cohen ≈ Rainbow Epstein ≈ Nick, Elizabeth and Natasha Mullins ≈ Nathan, Ona, Tristan and Camden Ococoza ≈ Outdoor World ≈ John and Liz Park ≈ Margaret Perchert ≈ Kasie Roads ≈ Philip Shaw ≈ David and Monica Terrazas ≈ Mary Lou and Anne Weidlich and Evan and Nolan Frink ≈ Keiichiro Yoshida ≈ Lauren Zephro

Welcome



## SANTA CRUZ MUSEUM OF NATURAL HISTORY

1305 East Cliff Drive | Santa Cruz, CA 95062  
831.420.6115 | [www.santacruz museums.org](http://www.santacruz museums.org)  
FAX 831.420.1137 | Surfing Museum 831.420.6289  
E-MAIL | [staff@santacruz museums.org](mailto:staff@santacruz museums.org)

**Museum of Natural History**  
Tuesday – Saturday | 10 am–5 pm  
Closed Sunday and Monday

**Surfing Museum Schedule**  
Thursday – Monday | noon–4 pm  
Closed Tuesday and Wednesday

Nonprofit Org.  
US POSTAGE  
**PAID**  
SANTA CRUZ, CA  
Permit # 209

ADDRESS SERVICE REQUESTED



October | December 2010

Members' NEWSLETTER