



# SANTA CRUZ MUSEUM OF NATURAL HISTORY

## WELCOME **Daniel Harder** *Executive Director*


**The Board of Directors is delighted to announce that Dan Harder has joined the Museum as Executive Director.**

Understanding nature is a life-long passion for Dan. He obtained a Bachelor of Science degree in botany from the University of Wisconsin, Madison, and went on to graduate school in botany at UC Berkeley. After graduation Dan was hired as an assistant Curator at the Missouri Botanical Garden (MBG) in St Louis. For more than a decade, he curated large collections of tropical legumes within the herbarium and led programs in botanical collecting, inventory, and research in 15 countries in the Old World. He established collaborative partnerships in Africa and Indochina that led to significant new species discoveries and new records for the floras of these regions. For eight years, until late in 2009, Dan was the Executive Director of the UCSC Arboretum and an adjunct faculty member at UCSC. He has a broad interest in science and collections and provided his expertise to interesting work with the FDA on cigarettes, museum development, sustainable farming, ethnobotany, forensic analysis, animal forage studies, global climate change, and intellectual property rights. He continues his research on plants from the Central Coast as a Research Associate at the California Academy of Sciences in San Francisco. Dan lives in Bonny Doon and, with his wife, Victoria, home-schools their two children, Lydia and Jonah.

On joining the Museum, Dan remarked, "It is exciting to be chosen as Executive Director of a much-loved local institution and to work closely with the Board of Directors, Staff, Volunteers, and community of friends



to sustain the Museum and support its primary mission of connecting people with nature and inspiring stewardship of the natural world". Dan will use the recently adopted Strategic Plan as the template for the Museum to advance the mission and successfully function as an independent organization. Through enhancement of visitor experience, improving engagement with our community, advancing collection stewardship, and stabilizing the financial foundation of the organization, the Museum will improve its effectiveness as an educator, collection steward, and liaison between nature, science, and learners of all ages. The spirit of the mission of the Museum is a comfortable fit for Dan and his experiences. "My passion for continuing to learn about global biological diversity, sustaining collections for education and research, and the importance of educational outreach to promote stewardship of the earth continues to motivate me in my professional and personal life".

Please introduce yourself to Dan the next time you visit the Museum. He would love to meet you and hear your ideas. 

## EDUCATION NOTES

### Sandhills Pilot Program

This November, the Museum launched its *Exploring the Santa Cruz Sandhills* Pilot Program, a new environmental education program for seventh-grade students. This program introduces students to the fascinating Santa Cruz Sandhills through an in-class presentation and a field trip to the Morgan Preserve in Scotts Valley. Students learn about the unique biology and geology of the region, and participate in a conservation project to help preserve this special community of plants and animals. 🌀



Photos | Museum Staff



**ABOVE** | Education Manager Kristen Van Kley (right) guides a class as they work on a fossil finding activity.

**LEFT** | Docent Hilary Benton helps students conduct soil testing on samples collected from the area.



## NEW! CONNECT WITH NATURE SERIES: Natural History Classes for Adults

Connect with Nature this winter—attend a class in this new series. Classes meet every Saturday from January 29 – February 19 at the Museum, unless otherwise noted. Each class is \$8 for members and \$10 for the general public. Register online or in person at the event.

**January 29 | Discover the Santa Cruz Sandhills, A Biodiversity Hotspot in Your Own Backyard**  
Take a hike with ecologist Jodi McGraw and learn about the diversity and fascinating ecology of the Santa Cruz Sandhills. Meets @ the Morgan Preserve, Scotts Valley.

**February 5 | Behind the Bones**  
Join Frank Perry, guest curator of the current “Bones” exhibit, for a behind the scenes look at the exhibit.

**February 12 | Peregrine Falcons**  
Glenn Stewart, Director of the SC Predatory Bird Research Group, will speak about peregrine falcon population recovery and current status in the Bay Area.

**February 19 | Lifeways of the Ohlone Indians of the San Francisco and Monterey Bay**  
A lecture and slide show with California State Parks Archaeologist Mark Hylkema. 🌀

### Winter Docent Training

Do you like to learn about nature? Do you like to share your knowledge with others? Become a docent at the Museum! Museum docents are volunteer tour guides, trained by museum staff to lead school programs about Ohlone Culture and History, local animals and their habitats, Neary Lagoon (a local wetland habitat), and temporary exhibits. No previous experience is necessary to join our docent team! Visit [www.santacruz museums.org](http://www.santacruz museums.org) to register or to find out more.

#### WINTER TRAINING DATES:

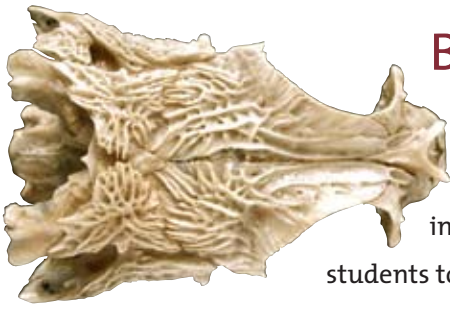
**Monday, January 3, 10am-12pm | Bones Tours**

**Monday, January 10, 10am-12pm | Animal Tours** 🌀



Photo | Museum Staff

Photo | Frank Perry



## Bones Tours

This January and February, the Museum will be offering school tours for our current temporary exhibit—*Bones: An Inside Look at Nature*. These docent-led tours will introduce students to bone basics and human skeletal structure, and will allow students to do an in-depth exploration of the exhibit. Tours will be available for grades K-6. 🌀

## Fall Docent Enrichment

This fall, many of our docents participated in the docent enrichment program, which aims to provide docents with opportunities to increase their knowledge of local natural history topics. We offered three docent enrichment sessions this fall: Mark Hylkema, State Parks Archaeologist, presented an informative and entertaining lecture and slideshow on the topic of Ohlone Culture and History. Mark has worked with the Ohlone people for years and has a true passion for their story. Docents and staff were inspired by his knowledge and enthusiasm. We were also treated to a lecture and slideshow on the Santa Cruz Sandhills by Jodi McGraw, ecologist and Sandhills expert. Jodi shared her extensive knowledge with the group and inspired us in advance of our new pilot education program in the Sandhills. And lastly, Todd Newberry, local birding expert, led our group on a birding walk through Neary Lagoon. Todd shared his great knowledge of birds with the group, as well as teaching and birding techniques. 🌀



## Neary Notes

The Neary Lagoon Wetland Walk program got off to a great start this fall. Returning in October to find a recently dredged and mowed Neary Lagoon, things looked a little sheepshorn. Our resilient wetland, however, quickly filled out into its usual, beautiful marshy habitat. Of course, with a trimmed look, it was a great opportunity to look for shy birds that students rarely have the chance to see. Herons, ranging in size and variety from green and black-crowned to the great blue have been frequent sights. A pleasant surprise has been the surge in the pied-billed grebe population. After a successful mating season last spring, the students regularly spot 8 to 10 “submarine birds” during the course of a walk. The best part of these grebe sightings is that some of the children have had the privilege of witnessing their feeding habits. Nothing says wild kingdom like one of these little waterfowl swallowing a whole crawfish!

Of course none of this educational action could take place without the help of our committed docent crew. During the fall season 30 class groups observed the secrets and wonders of the lagoon. That’s more than 600 students in a two month period! With all of this activity, you can imagine the kind of support that is necessary to keep the program running smoothly. Donating their time and energy, our volunteer docents both educate and entertain. It is no accident that teachers commonly refer to this field trip as their favorite of the year. Thank you docents! 🌀



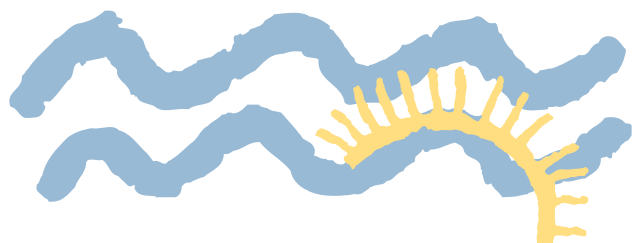
Photo | Museum Staff

Naturalist Jodi McGraw highlights the unique features of the sandhills habitat for docents.



Photo | Museum Staff

An enthusiastic group of third graders braves the rain for a tour of Neary Lagoon last November.



# MUSEUM UPDATES

## Garden Update

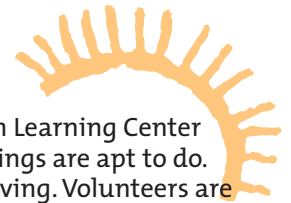


Photo: Michelle Whiting

Volunteers help weed the hummingbird garden and clear away ivy on October's Make a Difference Day.

You may have noticed that the Garden Learning Center is constantly changing, as all living things are apt to do. The new Hummingbird Garden is thriving. Volunteers are working to remove ivy to make way for the addition of butterfly and Ohlone themed gardens. An exciting new addition is the California Pipevine (*Aristolochia californica*) that was planted in November, courtesy of our new partners at The Butterfly Project. These plants, although small now, will eventually host the larvae of the Pipevine Swallowtail Butterfly, an uncommon species in Santa Cruz County. Of course, the garden isn't just there to look pretty. It's also there to educate, so interpretive signs will be designed to provide information about all of our new additions. Our thanks to the Seabright Neighborhood Association for their continued support of the Garden Learning Center. ☻

## Pilkington Creek Cleanup

This fall, Museum volunteers continued to help with the habitat restoration project in Pilkington Creek that was launched by neighborhood resident Nancy Lenz. Volunteers representing organizations as diverse as California Native Plant Society, UCSC, Santa Cruz Bible Church, Seabright Neighborhood Association, Chuck Haugen Conservation Fund, and the Museum of Natural History donated over 250 hours of their time during the first five work days. They



Photos: Michelle Whiting



removed enough invasive plants to fill a 20 yard dumpster, cleared away countless bins of trash and recyclables, and have added more than 30 native plants to the cleared area. Volunteers will continue to care for this site in the coming months by weeding, planting, and making plans for a second season that will start next August. All are welcome to join the restoration crew. Work dates will take place from 10:00am – 1:00pm on the second Saturday of the month throughout 2011.

For more information about this project, please visit <http://pilkingtoncreek.org>. ☻



**TOP** | Over 40 people volunteered on the last major work day of the season, representing the Seabright Neighborhood, UCSC, California Native Plant Society, Santa Cruz Bible Church, and the Museum of Natural History.

**LEFT** | Seabright neighborhood residents Jeb Bishop and Pat Lenz help load a 20 yard dumpster with invasive plants.



## 37th Annual Fungus Fair

Join the Fungus Federation of Santa Cruz in putting the fun in fungus: come visit the annual Fungus Fair, held Friday, January 7, 4 to 7 pm (new this year), Saturday and Sunday, January 8 and 9 from 10 am to 5 pm, at the Louden Nelson Community Center in downtown Santa Cruz. Take the family to the Children's Room for activities, learn the basics of mushroom identification at Mushrooms 101, or sample mushroom-based fare at the chefs' demonstrations. Admission is \$7 for adults, \$5 for students and seniors; children under the age of 12 are free.

For more information about this year's schedule, go to [scfungusfair.org](http://scfungusfair.org). 



Photo | Museum Staff

## Thank You *Bones* Volunteers and Sponsors




Karl Heiman, who discovered the exhibit's centerpiece whale fossil, chats with his wife Nellie (center) and former mayor Cynthia Mathews (left).

The Museum brought its skeletons out of the closet on October 1 for the opening night of *Bones: An Inside Look at Nature*. The exhibit has been an incredible success, thanks to the help of our volunteers and the support of our sponsors. *Bones* will be on display until February 26. Thank you so much to everyone who helped out!



Former SCMNH Board Member Jerry Walters and his wife, Robynn Walters, enjoying the reception.

Photos | Museum Staff

**VOLUNTEERS** | Glenn Bartz, Kathleen Church, Joan Davisson, Cecily Finke, Mary Goldman, Lani Hall, Perlita Dicochea, Christina Floyd, Gloria Lee, Birdie Mackin, Joe Mikles, Sara Mikles, Sylvia Patience, Diane Rejman, Jim Rolens, Gail Sherman, Lance Sprague, Juanita Stock, Tom Swanson. **SPONSORS** | Cruz Car Wash, Talmadge Construction, The Print Gallery, Arizona Dry Bones, Caffe Pergolesi, Community Printers, Joni L. Janecki & Associates, Lynn Piquett, and Mr Toots Coffeehouse. 

## Museum Recognized for Being Green



The Museum of Natural History, along with 16 other local businesses, was recognized at the November 10 City Council meeting for earning its Green Business certification from the Monterey Bay Area Green Business Program. To be certified "green," participants must be in compliance with all regulations and meet program standards for conserving resources, preventing pollution and minimizing waste. 



**RIGHT** | Mayor Rotkin presents a green business certificate (appropriately mounted on recycled circuit board) to Museum staff members.



Photos | Crystal Birms



## NEW FACES

### Welcome Liz

We are pleased to announce a new addition to the Museum staff: Liz Broughton, Museum Administrator. Liz grew up in the San Lorenzo Valley before heading off to UC Berkeley to pursue a degree in anthropology and Celtic studies. While there she conducted research on baboon teeth morphology for the Integrative Biology Department and interned with the Hearst Museum of Anthropology. She continued her education at the University of Washington in Seattle where she earned an MA in the field of Museology, the study of how museums develop their role as educational institutions in response to the communities around them. She gained a broad understanding of museums through coursework and internships at the Burke Museum of Natural History, the Woodland Park Zoo, and the Experience Music Project and Science Fiction Museum. Liz is passionate about public understanding and engagement in science and is excited to be a part of the Museum of Natural History here in Santa Cruz. 🌀

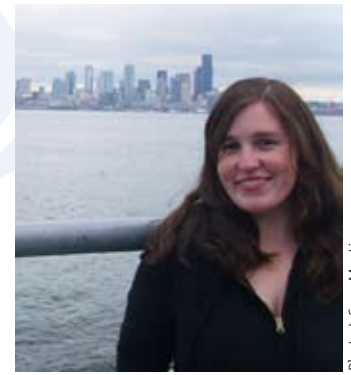


Photo | Sara Martinez

### Welcome Back Matt Miller

Peter Wampler, Museum Education Assistant, will be taking an extended honeymoon with his new wife this winter and spring. Although we will miss Peter, we are excited to welcome Matt Miller, last year's Neary Lagoon intern, as his temporary replacement. Matt is looking forward to rejoining the museum team and gaining more experience in the environmental education field. 🌀



Photo | Museum Staff



Photo | Museum Staff

### Welcome New Docents

We were excited to welcome nine new docents to our Museum team this fall. These docents completed our Fall Docent Training, spent time observing tours led by our seasoned returning docents, and are now leading school groups on their own. Our school tour season is in full swing, and we are grateful to have these new recruits on board to accommodate the high number of classes coming to the Museum for Ohlone and Animal tours.

Sylvia Patience | Ana Maia McHugh | Tracy Yuting Gao | Erik Hansen | Joanna Bremser | Andrea Nell | Mary Dolan | Perlita Dicochea | Jordy Malmberg 🌀

### Neary Lagoon Intern

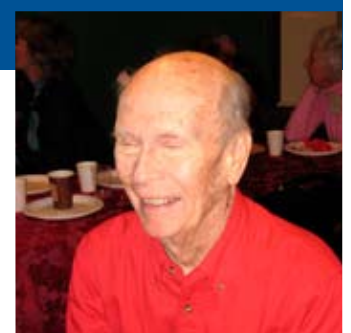
The Neary Lagoon program has been fortunate, over the years, to have the help of a wonderful succession of student interns. This fall season was no exception. Katelin Davis, a third year art major at UCSC, joined the education team at the Museum last October to assist with the Neary Lagoon programs. With a "passion for teaching and conservation" Katelin was a perfect fit. Originally from Santa Barbara, Kate worked the past two summers at the Santa Barbara Zoological Gardens. Employed as a Zoo Camp Counselor, she has educated kids of all ages. She took these skills and applied them effectively to our Wetland and Watershed Walks. We are very pleased with Kate's wonderful attitude and hard work. Thank you Katelin! 🌀



Photo | Museum Staff

## SAD NEWS

The Museum family mourns the passing of Dee Bush, an alumna of our first-ever docent class, an active volunteer for 30 years, and a long-time friend of the Museum. When not involved with Museum programs, he was active in the Art League and, at the age of 88, drove to Ferrell's Donuts every week to pick up donations for the seniors' program at Loudon Nelson Community Center. We will miss Dee—his teaching, his stories, his Memorial Day tea parties, and the hibiscus flowers he brought to brighten our office. Since Dee was fond of cruises, we prefer to think we are not saying 'goodbye' but 'bon voyage'. 🌀



# December 2010

15

Wednesday – 5:30 - 7:30 pm  
**SCMA board meeting**

20

Monday – 1:00 - 4:00 pm  
**Touch tank cleanout** | contact Liz if interested [liz@santacruz museums.org](mailto:liz@santacruz museums.org)

21

Tuesday – 7:00 - 9:00 pm  
**Mushroom Identification Class** | must be members of the Fungus Federation of Santa Cruz (FFSC) to attend. Join at [www.fungusfed.org](http://www.fungusfed.org)

22

Wednesday – 10:00 am - 5:00 pm  
Last day Museum open before holiday closure, reopens Tuesday, January 4

# January 2011

3

Monday – 10:00 am - 12:00 pm  
**Docent Training** | Bones Tours

3

Monday – 3:00 - 4:30 pm  
**Tidepool Specimen Collecting** | contact Liz if interested [liz@santacruz museums.org](mailto:liz@santacruz museums.org)

4

Tuesday – 10:00 am - 5:00 pm  
**Museum reopens** | Happy New Year!

5

Wednesday – 7:00 - 9:00 pm  
**Mushroom Identification Class**  
Fungus Federation of Santa Cruz

7-9

Friday – 4:00 - 7:00 pm  
Saturday - Sunday – 10:00 am - 5:00 pm  
**37th Annual Fungus Fair** | Louden Nelson Community Center, 301 Center Street

8

Saturday – 10:00 am - 1:00 pm  
**Pilkington Creek Cleanup**

10

Monday – 10:00 am - 12:00 pm  
**Docent Training** | Animal Tours

15

Saturday – 10:00 am - 12:00 pm  
**Volunteer Garden Work Day**  
contact Jaime if interested at 420-1168 or [Jaime@santacruz museums.org](mailto:Jaime@santacruz museums.org)

19

Wednesday – 5:30 - 7:30 pm  
**SCMA board meeting**

27

Thursday – 7:30 - 10:00 pm  
**General meeting** | Santa Cruz Bird Club  
Officers meet at 6:30

29

Saturday – 10:00 am  
**Connect with Nature Series** | Discover the Santa Cruz Sandhills at the Morgan Preserve | Scotts Valley

# February 2011

2

Wednesday – 7:00 - 9:00 pm  
**Mushroom Identification Class**  
Fungus Federation of Santa Cruz

5

Saturday – 10:00 am  
**Connect with Nature Series** | Behind the Bones | at the Museum

12

Saturday – 10:00 am  
**Connect with Nature Series** | Peregrine Falcons | at the Museum

12

Saturday – 10:00 am - 1:00 pm  
**Pilkington Creek Cleanup**

16

Wednesday – 5:30 - 7:30 pm  
**SCMA board meeting**

18

Friday – 10:00 am - 12:00 pm  
**Volunteer Garden Work Day**  
contact Jaime if interested 420-1168 or [Jaime@santacruz museums.org](mailto:Jaime@santacruz museums.org)

19

Saturday – 10:00 am  
**Connect with Nature Series** | Lifeways of the Ohlone Indians of the San Francisco and Monterey Bay | at the Museum

23

Wednesday – 7:00 - 9:00 pm  
**Mushroom Identification Class**  
Fungus Federation of Santa Cruz

24

Thursday – 7:30 - 10:00 pm  
**General meeting** | Santa Cruz Bird Club | Officers meet at 6:30

26

Saturday – 10:00 am - 5:00 pm  
**Final Day of Bones: An Inside Look at Nature**

# March 2011

2

Wednesday – 3:00 - 4:30 pm  
**Tidepool Specimen Collecting**  
contact Liz if interested [liz@santacruz museums.org](mailto:liz@santacruz museums.org)

2

Wednesday – 7:00 - 9:00 pm  
**Mushroom Identification Class**  
Fungus Federation of Santa Cruz

12

Saturday – 10:00 am - 1:00 pm  
**Pilkington Creek Cleanup**

16

Wednesday – 5:30 - 7:30 pm  
**SCMA board meeting**

19

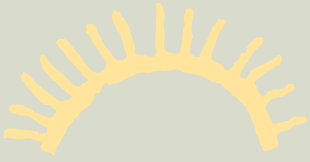
Saturday – 10:00 am - 12:00 pm  
**Volunteer Garden Work Day**  
contact Jaime if interested 420-1168 or [Jaime@santacruz museums.org](mailto:Jaime@santacruz museums.org)

23

Wednesday – 7:00 - 9:00 pm  
**Mushroom Identification Class**  
Fungus Federation of Santa Cruz

24

Thursday – 7:30 - 10:00 pm  
**General meeting** | Santa Cruz Bird Club | Officers meet at 6:30



## Home Is Where the Habitat Is

This year the Museum will mount three new temporary exhibits highlighting the flora and fauna that call Santa Cruz County their home. Each exhibit will emphasize the importance of protecting habitats so that these species can survive.

**Art of Nature** | April 9 – June 4, 2011

**Endangered Neighbors**  
June 11 – September 10, 2011

**Exploring Coastal Lagoons of Central California**  
October 15, 2011 - January 21, 2012



This Burrowing Owl is one of our Endangered Neighbors due to habitat loss in Santa Cruz County.

Photo | Sebastian Kemmerknecht

UPCOMING EXHIBITS



### Board of Directors

- Patty Quillin, *President*
- Naomi Gardner, *Vice-President*
- David Tanza, *Treasurer*
- Rainbow Epstein, *Secretary*
- Joni L. Janecki
- Glenn Nelson
- Larry Pageler



### Museum Staff

- Liz Broughton, *Museum Administrator*
- Dan Harder, *Executive Director*
- Jaime Karaszewski, *Outreach Coordinator*
- Lise Peterson, *Operations Manager*
- Kristen Van Kley, *Education Manager*
- Peter Wampler, *Education Assistant*
- Jesse Shank } *Museum Attendants*
- Mary Verutti }

THANK YOU!

## New SCMA Members and Donors

Welcome

Tom Bates and Karin Carter ≈ Michael and Frances Bolte ≈ Peg Danielson ≈ Victoria and James Dobson ≈ Anne Hayes ≈ Joe Hedgecock and Charlene Oatey ≈ Karl Heiman/Caffé Pergolesi and Mr Toots Coffeehouse ≈ George Henderson ≈ Jay Henry ≈ Pam Howell ≈ Tim Johnson and Valerie Sims ≈ Amy Kopald ≈ Jeremy Lezin/Cruz Car Wash ≈ Denny Pini and Rona Ashby ≈ Ingelise Rowe/Seaside Company ≈ Kelly Salazar and Hugh and Marshall Carter ≈ Jim and Noreen Schwartz ≈ Jeff Talmadge/Talmadge Construction ≈ Richard White/Arizona Dry Bones ≈ Donna Zahn



## SANTA CRUZ MUSEUM OF NATURAL HISTORY

1305 East Cliff Drive | Santa Cruz, CA 95062  
831.420.6115 | [www.santacruz museums.org](http://www.santacruz museums.org)  
FAX 831.420.1137 | Surfing Museum 831.420.6289  
E-MAIL | [staff@santacruz museums.org](mailto:staff@santacruz museums.org)

**Museum of Natural History**  
Tuesday – Saturday | 10 am–5 pm  
Closed Sunday and Monday

**Surfing Museum Schedule**  
Thursday – Monday | noon–4 pm  
Closed Tuesday and Wednesday

Nonprofit Org.  
US POSTAGE  
**PAID**  
SANTA CRUZ, CA  
Permit # 209

ADDRESS SERVICE REQUESTED



January | March 2011

Members' NEWSLETTER